



*Incubator
Shaker Incubator
Roller Rack
Oven*

About WIGGENS

What Does Wiggins Stand for?

- W**ide Product Range
- I**nternational Orientation
- G**reat Quality
- G**reat Service
- E**nergetic Team
- N**ew Technology
- S**olutions

Wiggins was established in 2005 with the goal of delivering the best laboratory equipment and service for reliable results. Since then Wiggins has been producing top-quality general laboratory equipment, analysis apparatus and chemical reaction and purification solutions. Our brand Wiggins stands for high quality, durability and remarkable performance.

Wiggins is your reliable laboratory companion and provides products that can be used in different kinds of laboratory environments. The Wiggins product range includes:

ChemVak Pumps
Wiggins General Lab Equipment
Life Science Equipment

ChemTron Gas
H₂ Generators
N₂ Generators
O₂ Generators
Zero Air Generators

ChemTron Reaction & Purification System
Reactor
Rotary Evaporator
Thin film evaporator
Molecular distillation device

ChemTron Analytics
Viscometer
Titrator
Density

ChemVak®

ChemVak, a brand of Wiggins, is specialized in pump technology offering an extensive range of vacuum pumps, vacuum filtrat and liquid pumps for various applications, including chemical-resistant diaphragm pumps, oil-free pumps and rotary vane vacuum pumps, vacuum filtration equipment for a wide range of different applications. In addition, peristaltic pumps, piston Liquid pumps, solvent recovery systems and bio-suction systems are part of the product range.



ChemTron is our product brand focusing on analysis apparatus, gas generators, chemical reaction solutions, chemical process separation and purification solutions, including efficient chemical separation tools-rotary evaporator, thin film evaporator, molecular distillation device, automatic distillation system, crystallization system etc...



Contents

Constant Temperature Incubator	05
Peltier-cooled Incubator	07
Low Temperature Incubator	08
CO ₂ Incubator	12
Peltier-cooled CO ₂ Incubator	14
Portable Mini CO ₂ Incubator	15
Tri-Gas Incubator	16
CO ₂ Incubator for Cell Factory	17
Mega Constant Temperature Incubator	18
Mega CO ₂ Incubator	20
Shaker Incubator	25
Roller Rack CO ₂ Incubator	29
Shaker CO ₂ Incubator	30
Shaker for CO ₂ Incubator	35
Cell Culture Roller Rack	36
Forced Convection Oven	40
Vacuum Oven	42

Incubator

- Constant Temperature Incubator
- Low Temperature Incubator
- Peltier-cooled Incubator
- CO₂ Incubator
- Peltier-cooled CO₂ Incubator
- Portable Mini CO₂ Incubator
- Copper Chamber CO₂ Incubator
- Tri-Gas Incubator
- Constant Temperature & Humidity Chamber



Constant Temperature Incubator

Versatile Air-jacket Incubators

Designed for uniform temperature distribution and reduced contamination risk caused by external air intrusion. Suitable for life science, pharmaceutical, medical, chemical, and biological applications requiring stable temperature incubation.

Features

- > Digital temperature display and control
- > PID controller for temperature stability and safety protection
- > Environmentally friendly design
- > Easy to clean with stainless steel shelves that are height adjustable
- > Tempered glass observation window for safety and effective sealing
- > Magnetic door with a high-quality gasket ensures superior sealing
- > Fan and heating elements stop when the door is opened
- > Alarm activates if the door remains open for more than 60 seconds



Specifications

Model	WH-05	WH-10	WH-15	WH-25
Order No.	W6031050	W6031100	W6031150	W6031250
Display and Control	LED display button control			
Volume [L]	50	100	150	260
Temperature Range [°C]	RT + 5 ~ 65	RT + 5 ~ 65	RT + 5 ~ 65	RT + 5 ~ 65
Temperature Uniformity [°C]	±0.3 at 37 °C (RT 25 °C)	±0.3 at 37 °C (RT 25 °C)	±0.3 at 37 °C (RT 25 °C)	±0.3 at 37 °C (RT 25 °C)
Temperature Stability [°C]	±0.1 at 37 °C	±0.1 at 37 °C	±0.1 at 37 °C	±0.1 at 37 °C
Timer	1 min ~ 99 h 59 min	1 min ~ 99 h 59 min	1 min ~ 99 h 59 min	1 min ~ 99 h 59 min
Safety	Independent over-temperature protection and door-open alarm			
Heating Capacity [W]	340	340	340	610
Shelves [included / max.]	2/10	2/14	2/20	3/17
Inner Dimensions [W x D x H (mm)]	345x368x375	480x480x495	500x480x620	530x590x900
Outer Dimensions [W x D x H (mm)]	440x488x621	560x569x761	559x586x873	633x688x1177
IP code	IP20	IP20	IP20	IP20
Weight [kg]	35	50	65	115
Power supply	AC 220~240 V, 50/60 Hz			



Over-temperature Protection

Heating is automatically cut off by a safety device in the event of temperature control failure or excessive heating beyond the set point.



Easy to Clean

Rounded Corner allows easy cleaning. The entire chamber is made of stainless steel (SUS304)



Perforated Shelves

Perforated shelves promote natural airflow and are made of stainless steel for corrosion resistance and contamination control.

Materials

Housing	Powder coated stainless steel
Interior	Stainless steel
Shelves	Stainless steel
Inner transparent door	High temperature resistant glass, Thickness: 5 mm



WH-400



WH-850

Model	WH-400	WH-650	WH-850	WH-850X*
Order No.	W6031400	W6031650	W6031850	W6031851
Display and Control	LED display button control			
Volume [L]	400	650	850	850
Temperature Range [°C]	RT + 5 ~ 65	RT + 5 ~ 65	RT + 5 ~ 65	RT + 5 ~ 65
Temperature Uniformity [°C]	<±0.5 at 37 °C (RT 25 °C)	<±0.5 at 37 °C (RT 25 °C)	<±0.5 at 37 °C (RT 25 °C)	<±0.5 at 37 °C (RT 25 °C)
Temperature Stability [°C]	±0.1 at 37 °C	±0.1 at 37 °C	±0.1 at 37 °C	±0.1 at 37 °C
Timer	1 min ~ 99 h 59 min	1 min ~ 99 h 59 min	1 min ~ 99 h 59 min	1 min ~ 99 h 59 min
Safety	Independent safety temperature protection, Open door alarm function			
Heating Capacity [W]	700	1100	1400	1400
Shelves [included / max.]	3/18	3/23	3/26	0/26
Inner Dimensions [W x D x H (mm)]	600x630x1100	700x650x1430	700x800x1530	868x720x1530
Outer Dimensions [W x D x H (mm)]	781x762x1433	859x822x1765	857x963x1856	993x887x1911
IP code	IP20	IP20	IP20	IP20
Weight [kg]	160	230	260	299
Power supply	AC 220~240 V, 50/60 Hz	AC 220~240 V, 50/60 Hz	AC 220~240 V, 50/60 Hz	AC 220~240 V, 50/60 Hz

* WH-850X Standard includes the incubator only, shelves need to be ordered separately. The rails are built at the bottom allows easy installation, positioning, and movement of roller culture devices.

Peltier-cooled Incubator

This series combines heating and Peltier cooling technology to provide precise, energy-efficient temperature control with minimal fluctuation. It is suitable for applications requiring stable incubation conditions in life science, pharmaceutical, medical, chemical, and biological laboratories.

Features

- > Pre-set start time and timer function
- > Four editable temperature programs, each with up to five steps
- > Four preset temperature shortcuts
- > For temperature units, you can choose between °C and °F
- > Over-temperature alarm with automatic power cut-off
- > Tempered glass observation window
- > Adjustable stainless-steel shelves
- > Automatic restart or stop after power recovery
- > Fan and heating stop when the door is opened
- > Peltier cooling for energy-efficient temperature control
- > Circulation method prevents air pollution and ensures precise temperature distribution



Specifications

Model	WH-01	WH-02	WH-10P	WH-15P
Order No.	W6053015	W6053050	W6053100	W6053150
Display and Control	5-inch TFT touchscreen control			
Temperature Control Method	Forced circulation			
Volume [L]	15	50	100	150
Temperature Range [°C]	+4 ~ 60 (at 20 °C RT)	+4 ~ 60 (at 20 °C RT)	+10 ~ 60 (at 20 °C RT)	+10 ~ 60 (at 20 °C RT)
Temperature Stability [°C]	±0.1	±0.1	±0.1	±0.1
Timer	1 min ~ 999h 59 min / continuous			
Heating Capacity [W]	150	300	450	450
Max. Cooling Capacity [W]	350	350	350	350
Shelves [included / max.]	2/4	2/6	2/8	2/10
Inner Dimensions [W x D x H (mm)]	315x200x240	335x370x380	480x478x500	480x500x625
Outer Dimensions [W x D x H (mm)]	402x416x440	442x556x613	622x675x801	620x696x930
IP code	IP20	IP20	IP20	IP20
Weight [kg]	24	35	65	80
Power supply	AC 220 ~ 240V, 50/60 Hz	AC 220 ~ 240V, 50/60 Hz	AC 220 ~ 240V, 50/60 Hz	AC 220 ~ 240V, 50/60 Hz

Low Temperature Incubator

Designed for low-temperature storage and incubation of samples in life science, pharmaceutical, medical, chemical, and biological laboratories.

Features

- > Six-side direct heating system for stable temperature uniformity and fast heat-up/recovery
- > High-quality compressors and eco-friendly refrigerants
- > The independent over-temperature protection device cuts off heating upon reaching the safe temperature
- > Programmable temperature control
- > Forced-air circulation combined with perforated shelves ensures uniform airflow
- > When the door is opened, the circulation fan and heater automatically stop running

Application

- > Life science
- > Microbiological laboratories
- > Hospital laboratories
- > Pharmaceutical laboratories
- > Have timer function
- > Food testing laboratories
- > Scientific laboratories in universities
- > Cosmetic industry
- > Food and beverage
- > Agricultural industry



WH-15C

Specifications

Model	WH-15C	WH-26C	WH-45C	WH-75C
Order No.	W6055151	W6055260	W6055450	W6055750
Display and Control	LED display button control			
Temperature Control Method	Forced circulation method			
Volume [L]	150	260	450	750
Chamber material	304 stainless steel			
Temperature Range [°C]	+4 ~ +60			
Temperature Stability [°C]	±0.1 (at 37 °C)			
Temperature Uniformity [°C]	< ±0.5 (at 37 °C)	< ±0.5 (at 37 °C)	< ±1 (at 37 °C)	< ±1 (at 37 °C)
Heating Capacity [W]	1350	1350	1400	1400
Max. Cooling power [W]	350	550	550	550
Shelves [included / max.]	2/5	2/9	2/8	2/18
Inner Dimensions [W x D x H (mm)]	560x500x535	640x500x800	1040x600x720	1040x600x1200
Outer Dimensions [W x D x H (mm)]	781x682x1220	861x682x1485	1300x819x1629	1300x837x1968
Communication interface	RS232/485			
IP code	IP20			
Weight[kg]	145	175	213	279
Power supply	220V / 50 or 60Hz			

Optional natural refrigerant version available
For ordering, please add "N" after the ordering number

Low Temperature Incubator

WH-150C / 260C / 450C / 750C

With touchscreen and more options

With a touchscreen interface, the WH series cooled incubators offer intuitive operation, flexible parameter setting, and expanded control functions.

Features

- > Double-door design with an inner glass door
- > 7-inch touch display for intuitive operation
- > Overheat and overcurrent protection
- > Auto-start function allows selection between auto-run or auto-stop after power recovery
- > The independent over-temperature protection device cuts off heating upon reaching the safe temperature
- > The USB port is designed for data storage

APPLICATION

- > Life science
- > Microbiological laboratories
- > Hospital laboratories
- > Pharmaceutical laboratories
- > Food analyzing laboratories
- > Scientific laboratories in universities
- > Cosmetic industry
- > Food and beverage
- > Agricultural industry



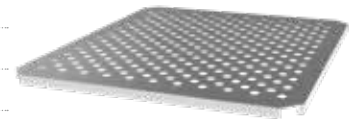
Specifications

Model	WH-150C	WH-260C	WH-450C	WH-750C
Order No.	W6056150	W6056260	W6056450	W6056750
Display and Control	7-inch TFT touchscreen control			
Volume [L]	150	260	450	750
Temperature Range [°C]	+4 ~ +60	+4 ~ +60	+4 ~ +60	+4 ~ +60
Temperature Stability [°C]	±0.1 (at 37 °C)	±0.1 (at 37 °C)	±0.1 (at 37 °C)	±0.1 (at 37 °C)
Temp. Uniformity [°C]	<±0.5 (at 37 °C)	<±0.5 (at 37 °C)	<±1 (at 37 °C)	<±1 (at 37 °C)
Cooling mode	Compressor	Compressor	Compressor	Compressor
Heating Capacity [W]	1350	1350	1400	1400
Max. Cooling power [W]	350	550	550	550
Number of shelves [included / max.]	2/5	2/9	2/8	2/18
Timer	1min-999h59min	1min-999h59min	1min-999h59min	1min-999h59min
Communication interface	RS232/485	RS232/485	RS232/485	RS232/485
Inner Dimensions [W x D x H (mm)]	560x500x535	640x500x800	1040x600x720	1040x600x1200
Outer Dimensions [W x D x H (mm)]	781x682x1220	861x682x1485	1300x819x1629	1300x837x1968
Weight [kg]	145	175	213	279
Power supply	220V / 50 or 60Hz	220V / 50 or 60Hz	220V / 50 or 60Hz	220V / 50 or 60Hz

Optional natural refrigerant version available
For ordering, please add "N" after the ordering number

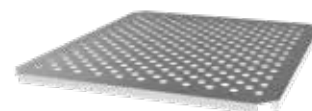
Accessories

Order No.	Part	Description	Suitable for
W6041151	Perforated Shelf	Max. load up to 30kg	WH-15C/WH-150C/WHT-150
W6041261	Perforated Shelf	Max. load up to 30kg	WH-26C/WH-260C/WHT-260
W6041451	Perforated Shelf	Max. load up to 30kg	WH-45C/WH-450C/WHT-450
W6041751	Perforated Shelf	Max. load up to 30kg	WH-75C/WH-750C/WHT-750
W6041152	Reinforced perforated shelf	Max. load up to 60kg	WH-15C/WH-150C/WHT-150
W6041262	Reinforced perforated shelf	Max. load up to 60kg	WH-26C/WH-260C/WHT-260
W6041452	Reinforced perforated shelf	Max. load up to 60kg	WH-45C/WH-450C/WHT-450
W6041752	Reinforced perforated shelf	Max. load up to 60kg	WH-75C/WH-750C/WHT-750
W6041153	Illumination equipment	Cold white light, 0~100% adjustable, 10000 Lux, -20...+45 °C	WHT series
W6041154	Inner power socket	230V/2.6A output, IP68	WHT series
W6041158	Water storage tanks	Includes 2 L water tank, filter lid, and water tube	WHT series
W6041159	Water tube	Connect humidity controller and water storage tanks	WHT series



Incubator Accessories

Order No.	Item	Description	Suitable for
Incubator shelf for holding cultures in the chamber			
W6030501	Perforated Shelf kit		WH-05
W6031001	Perforated Shelf kit		WH-10
W6031501	Perforated Shelf kit	Perforated shelf to improve uniformity, Stainless steel material can effectively resist corrosion and pollution, load 15kg	WH-15
W6032501	Perforated Shelf kit		WH-25
W6053016	Perforated Shelf kit		WH-01
W6053051	Perforated Shelf kit		WH-02
W6053101	Perforated Shelf kit		WH-10P
W6053151	Perforated Shelf kit	Perforated shelf to improve uniformity, Stainless steel material can effectively resist corrosion and pollution, load 15kg	WH-15P
W6034001	Perforated Shelf kit		WH 400
W6036501	Perforated Shelf kit	Perforated shelf to improve uniformity, Stainless steel material can effectively resist corrosion and pollution, load 15kg	WH-650
W6038501	Perforated Shelf kit		WH-850
Roller base: Placed at the bottom of the incubator for support and easy movement			
W6010402	Roller base	To move incubator easily	WH-05
W6031002	Roller base	To move incubator easily	WH-10
W6031502	Roller base	To move incubator easily	WH-15
Stacking kit: to stack and fix the incubator			
W6031003	Stacking kit	To stack and fix the incubator	WH-10
W6031503	Stacking kit	To stack and fix the incubator	WH-15
Other Accessories			
W6011806	UV lamp	A 4W UV lamp is placed at the top of the chamber, next to the circulating fan. UV rays do not radiate the sample and can be sterilized during culture.	All series incubator (Except dry heat sterilization incubators)
W6011816	Access port for auxiliary monitoring	Diameter of 30mm (40mm customizable), for sampling, experimental verification and penetration of additional equipment power or signal cables in the incubator	All series incubator
W6011809	Monitoring system	PC-based monitoring software for remote real-time monitoring of incubator operating status	All series incubator
W6011809-1	Connecting wire	With anti-shedding interface for PC to the incubator, unit/m	All series incubator
W6051502	Power socket in chamber	Three-jack socket, 220 V, for power supply inside the chamber, not exceed 1000 W	All series incubator
W6051503	LED lamp	Installed on the top of the chamber, with an independent lighting switch	All series incubator (Except dry heat sterilization incubators)



Roller base



Stacking kit



CO₂ Incubator

The WIGGENS CO₂ incubator is designed for cell culture applications requiring precise temperature and CO₂ control, including the cultivation of animal cells, embryos, sperm and ova, anaerobic cells, microorganisms, and specialized tissues.

Features

Fast Heat-Up, Fast-Recovery, Stable Control

6 Sides Direct Heating System

Electric heating wires surround the chamber, ensuring stable temperature uniformity and enabling rapid heat-up and recovery. The heating section has three parts, each independently controlled and calibrated by its own temperature sensor.

Dry Wall and Air Jacket

Warm air generated by the heating wires is retained in the space between the chamber and the insulation layer, facilitating faster temperature recovery and reducing heat loss. The insulated dry wall requires no regular maintenance.

DUAL BEAM IR CO₂ Sensor

Fast & precise detection for CO₂ gas regardless of temperature and humidity.

Natural Humidification Using Water Tray

The bottom heater warms the water in the tray to create humidity, while the circulation fan distributes the moisture throughout the entire chamber.



Specifications

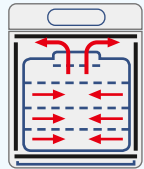
Temp. Range:	RT +5 ~ 60 °C
Temp. Resolution:	0.1°C
Dry Heat:	Up to 125 °C (WCI-40 / 180 / 260)
Temp. Control:	Digital PID
CO ₂ Range:	0% ~ 20%
CO ₂ Accuracy:	±0.1% (5% / 37 °C)
CO ₂ Resolution:	0.1%
CO ₂ Sensor:	IR CO ₂ Sensor
Display and Control:	LED display button control
IP code:	IP20
Operating panel:	Individual 2-Channel Touch Button
Jacket type:	Air Jacket Type (6 sides heat)
Chamber material:	Stainless Steel (304)

Model	WCI-40	WCI-120
Order No.		
Standard	W6011040	W6011120
Sterilization	W6012040	W6012120
Chamber volume [L]	40	120
Temperature Stability [°C]	±0.1 (37 °C)	±0.1 (37 °C)
Temp. Uniformity [°C]	±0.3 (37 °C / RT20 °C)	±0.3 (37 °C / RT20 °C)
Heating Capacity [W]	320	320
CO ₂ Inlet pressure range [bar]	0.3 ~ 0.5	0.3 ~ 0.5
Number of shelves [included / max.]	2/9	3/15
Chamber dimensions [W x D x H (mm)]	320x350x375	480x470x520
Overall dimensions [W x D x H (mm)]	430x469x572	590x570x767
Weight [kg]	35	65



Alarm System

Buzzer alerts for low or high deviations in CO₂ levels and temperature.



Gentle Air and Moisture Convection

Natural air and moisture convection. Air and moisture in the chamber are gently distributed by six-sided heating and the air circulation fan.



Easy to Clean

Easy-to-clean design with rounded corners. Chamber crafted entirely from SUS304 (AISI 304) stainless steel.



Over-temperature Protection

Heating is automatically cut off by a safety device in the event of temperature control failure or excessive heating beyond the set point.



Perforated Shelves

Perforated shelves promote natural air flow and are made of stainless steel, which is resistant to rust and contamination.



No Condensation

Heating from the front door heater and frame heater prevents condensation inside the chamber and on the glass door.



Microprocessor PID Control

Intelligence Control for CO₂ density, Temperature, Alarm, Automatic Decontamination (Optional).



HEPA Filtration

HEPA filtration actively removes airborne particles to protect cell cultures and ensure stable chamber conditions.

Options

Customize your incubator with these options



Access Port

30mm Access Port is available at left side. (Upon ordering and additional charge)



UV Sterilization

4W UV is placed on the chamber ceiling and beside the circulation fan. The UV light cannot reach sample and sterilization is operated during culturing.



WCI-40, WCI-180, WCI-260 with a maximum dry heat temperature of 125 °C
No need to remove IR CO₂ sensor



Monitoring System

Connection port has been designed to observe equipment in real time even in the far distance.



Reduce gas consumption and heat loss, enabling faster recovery—ideal for various samples
5 Split Door for WCI-40
6 Split Door for WCI-180



WCI-260

Model		WCI-180	WCI-260	WCI-650	WCI-850	WCI-850X*
Order No.	Standard	W6011180	W6011260	W6011650	W6011850	W6011852
	Sterilization	W6012180	W6012260	W6012650	W6012850	-
Chamber volume [L]		180	260	650	850	850
Temperature Stability [°C]		±0.1 (37 °C)	±0.1 (37 °C)	±0.1 (37 °C)	±0.1 (37 °C)	±0.1 (37 °C)
Temp. Uniformity [°C]		±0.3 (37 °C / RT20 °C)	±0.4 (37 °C / RT20 °C)	±0.5 (37 °C / RT20 °C)	±0.5 (37 °C / RT20 °C)	±0.5 (37 °C / RT20 °C)
Heating Capacity [W]		320	610	1100	1400	1400
CO ₂ Inlet pressure range [bar]		0.3 ~ 0.5	0.6 ~ 0.7	0.7 ~ 1.0	0.7 ~ 1.0	0.7 ~ 1.0
Number of shelves [included / max.]		3/17	3/16	3/23	3/26	0/26
Chamber dimensions [W x D x H (mm)]		528x473x710	590x530x900	700x650x1430	700x800x1530	840x700x1590
Overall dimensions [W x D x H (mm)]		570x633x947	670x706x1177	857x823x1763	858x964x1856	993x887x1911
Weight [kg]		80	115	230	260	299

* WCI-850X Standard includes the incubator only, shelves need to be ordered separately. The rails are built at the bottom allows easy installation, positioning, and movement of roller culture devices.

Peltier-cooled CO₂ Incubator

This series combines CO₂ control with Peltier-based cooling and heating, allowing incubation below ambient temperature with high precision and low energy consumption. These innovations provide exceptional control accuracy with minimal fluctuations.

Specifications

Temp. Range:	+20 ~ 60 °C
Temp. Resolution:	0.1 °C
Dry Heat:	Up to 125 °C (WCI-40P / 180P)
Temp. Control:	Digital PID
CO ₂ Range:	0% ~ 20%
CO ₂ Accuracy:	±0.1% (5% / 37 °C)
CO ₂ Resolution:	0.1%
CO ₂ Sensor:	IR CO ₂ Sensor
Display and Control:	LED display button control
IP code:	IP20
Operating panel:	Individual 2-Channel Touch Button
Jacket type:	Dry Wall Type (6 sides heat)
Chamber material:	Stainless Steel (304)



WCI-180P

Model	WCI-40P	WCI-120P	WCI-180P	
Order No.	Standard	W6013040	W6013120	W6013180
	Sterilization	W6014040	W6014120	W6014180
Chamber volume [L]	40	120	180	
Temperature Stability [°C]	±0.1 (37 °C)	±0.1 (37 °C)	±0.1 (37 °C)	
Temp. Uniformity [°C]	±0.3 (37 °C / RT20 °C)	±0.3 (37 °C / RT20 °C)	±0.3 (37 °C / RT20 °C)	
Heating Capacity [W]	320	320	320	
CO ₂ Inlet pressure range [bar]	0.3 ~ 0.5	0.3 ~ 0.5	0.3 ~ 0.5	
Number of shelves [included / max.]	2/9	3/15	3/17	
Chamber dimensions [W x D x H (mm)]	320x350x375	480x470x520	528x473x710	
Overall dimensions [W x D x H (mm)]	420x513x572	580x646x767	560x694x947	
Weight [kg]	46	82	88	

Model	WCI-260P	WCI-650P	WCI-850P
Order No.	W6013260	W6013650	W6013850
Chamber volume [L]	260	650	850
Temperature Stability [°C]	±0.1 (37 °C)	±0.1 (37 °C)	±0.1 (37 °C)
Temp. Uniformity	±0.4 (37 °C / RT20 °C)	±0.5 (37 °C / RT20 °C)	±0.5 (37 °C / RT20 °C)
Heating Capacity [W]	610	1100	1400
CO ₂ Inlet pressure range [bar]	0.6 ~ 0.7	0.7 ~ 1.0	0.7 ~ 1.0
Number of shelves [included / max.]	3/16	3/23	3/26
Chamber dimensions [W x D x H (mm)]	590x530x900	700x650x1430	700x800x1530
Overall dimensions [W x D x H (mm)]	630x766x1177	820x860x1740	821x973x1856
Weight [kg]	125	260	296

Portable Mini CO₂ Incubator

Compact & Economical Mini CO₂ Incubator

Features

- > Portable design with carrying handles (car plug available)
- > Economical price and compact design for personal use
- > Suitable size for workstations or clean benches
- > Digital control for temperature and CO₂ levels
- > Forced air circulation by fan
- > Excellent temperature uniformity
- > Quick recovery and precise CO₂ control using IR sensor
- > Low-noise cooling operation
- > Two stainless steel shelves (standard)
- > Natural humidification via water tray
- > Cooling and heating using Peltier technology
- > Stainless steel water tray
- > Power plug and car jack



Car Jack



WCI-15R

Product Name	WCI-15R	
Chamber Volume [L]	15.2	
Temperature	Range [°C]	15 ~ 45 (at Ambient 25 °C)
	Accuracy [°C]	±0.25
	Control	Digital
CO ₂	Range	0 ~ 20%
	Sensor	Dual Beam IR Sensor
	Accuracy	±0.1% (5%)
	CO ₂ Inlet pressure range [bar]	0.7Bar (Max.1Bar)
Humidity	Up to 80%	
Display	LED Display	
Cooling & Heating	Peltier (thermoelectric elements)	
Number of shelves [included / max.]	2/3, Stainless steel	
Inner & Outside Material	ABS	
IP code	IP20	
Inside [W x D x H (mm)]	224x200x340	
Outside [W x D x H (mm)]	292x333x433	
Weight [kg]	6.8	
Power Supply	220 V, 50 / 60 Hz / DC 12 V	
Power Consumption	DC-COLD (46W), HOT (48W)	
	AC-COLD (63W), HOT (63W)	
Order No.	189221	

Accessories & Options

Order No.	Name
189231	Shelf (Stainless steel)
189232	Access port (Ø12mm)

Copper Chamber CO₂ Incubator

The copper chamber version provides improved antimicrobial performance for contamination-sensitive applications while retaining all the standard features of the stainless-steel model.



Specifications	Model	WCI-40Cu	WCI-180Cu
	Temp. Range:	RT +5 ~ 60 °C	
Temp. Resolution:	0.1°C		
Dry Heat:	Up to 125 °C		
Temp. Control:	Digital PID		
CO ₂ Range:	0% ~ 20%		
CO ₂ Accuracy:	±0.1% (5% / 37 °C)		
CO ₂ Resolution:	0.1%		
CO ₂ Sensor:	IR CO ₂ Sensor		
Display and Control:	LED display button control		
IP code:	IP20		
Operating panel:	Individual 2-Channel Touch Button		
Jacket type:	Dry Wall Type (6 sides heat)		
Chamber material:	Stainless Steel (304)		
Order No.	Standard	W6028040	W6028180
Order No.	Sterilization	W6028041	W6028181
Chamber volume [L]		40	180
Temperature Stability [°C]		±0.1 (37 °C)	±0.1 (37 °C)
Temp. Uniformity [°C]		±0.3 (37 °C / RT20 °C)	±0.3 (37 °C / RT20 °C)
Heating Capacity [W]		320	320
CO ₂ Inlet pressure range [bar]		0.3 ~ 0.5	0.3 ~ 0.5
IP code		IP20	IP20
Number of shelves [included / max.]		2/9	3/17
Chamber dimensions [W x D x H (mm)]		320x350x375	528x473x710
Overall dimensions [W x D x H (mm)]		420x460x570	560x688x952
Weight [kg]		38	80



WCI-180Cu

Standard package includes: incubator, shelves, water tray.

Tri-Gas Incubator (CO₂ / O₂ / N₂)

The Tri-Gas incubator is ideal for experiments involving the cultivation of animal cells, sperm and ova, anaerobic cells, various types of microbial cells, hatching and germination, as well as specialized tissues.



O₂ Control

Multi Gas Supply (N₂ & O₂) is available for all CO₂ incubators.



Specifications

Model	WCI-40T	WCI-120T	WCI-180T	WCI-260T	WCI-850T	
Display and Control	LED display button control					
Temperature	Range [°C]	Ambient+5 ~ 60	Ambient+5 ~ 60	Ambient+5 ~ 60	Ambient+5 ~ 60	
	Accuracy [°C]	±0.1 (37 °C)	±0.1 (37 °C)	±0.1 (37 °C)	±0.1 (37 °C)	±0.1 (37 °C)
	Resolution [°C]	0.1	0.1	0.1	0.1	0.1
CO ₂	Control	Digital PID	Digital PID	Digital PID	Digital PID	Digital PID
	Range	0% ~ 20%	0% ~ 20%	0% ~ 20%	0% ~ 20%	0% ~ 20%
	Accuracy	±0.1% (5% / 37 °C)	±0.1% (5% / 37 °C)	±0.1% (5% / 37 °C)	±0.1% (5% / 37 °C)	±0.1% (5% / 37 °C)
	Resolution	0.1%	0.1%	0.1%	0.1%	0.1%
	Sensor	IR CO ₂ Sensor	IR CO ₂ Sensor	IR CO ₂ Sensor	IR CO ₂ Sensor	IR CO ₂ Sensor
	Control	Microprocessor	Microprocessor	Microprocessor	Microprocessor	Microprocessor
O ₂	Inlet pressure range [bar]	0.5 ~ 0.6	0.6 ~ 0.7	0.6 ~ 0.7	0.6 ~ 0.7	0.9 ~ 1.0
	Range	0.6 ~ 85%	0.6 ~ 85%	0.6 ~ 85%	0.6 ~ 85%	0.6 ~ 85%
	Sensor	Zirconium dioxide sensor	Zirconium dioxide sensor	Zirconium dioxide sensor	Zirconium dioxide sensor	Zirconium dioxide sensor
Operating panel	Individual 2-Channel Touch Button					
Jacket type	Air jacket					
Chamber material	Stainless Steel (304)					
IP code	IP20					
Number of shelves [included / max.]	2/9	3/15	3/17	3/16	3/26	
Chamber dimensions [W x D x H (mm)]	320x350x375	480x470x520	528x473x710	530x590x900	700x800x1530	
Overall dimensions [W x D x H (mm)]	421x467x580	579x569x767	599x623x952	631x705x1177	852x971x1859	
Weight [kg]	35	65	78	115	266	
Order No. for standard version	W6021040	W6021120	W6021180	W6021260	W6021850	
Order No. for dry heat sterilization version	W6022040	W6022120	W6022180	W6022260	W6022850	

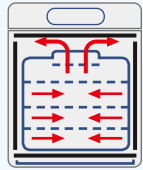
CO₂ Incubator for cell factory

Specially designed for 10-layer cell factory applications and large-scale animal cell culture.



Alarm System

Buzzer alerts for low or high deviations in CO₂ levels and temperature.



Gentle Air and Moisture Convection

Natural air and moisture convection. Air and moisture in the chamber are gently distributed by six-sided heating and the air circulation fan.



Easy to clean

Easy-to-clean design with rounded corners. Chamber crafted entirely from SUS304 (AISI 304) stainless steel.



Over-temperature Protection

Heating is automatically cut off by a safety device in the event of temperature control failure or excessive heating beyond the set point.



Perforated Shelves

Perforated shelves promote natural air flow and are made of stainless steel, which is resistant to rust and contamination.



No Condensation

Heating from the front door heater and frame heater prevents condensation inside the chamber and on the glass door.



Microprocessor PID Control

Intelligence Control for CO₂ density, Temperature, Alarm, Automatic Decontamination (Optional).

- > Five separate glass-door compartments inside one cabinet
- > Reduced gas consumption and minimized heat loss
- > Faster recovery after door opening
- > Convenient sample segregation and batch management
- > Each compartment designed for high-capacity cell factory loading



WCI-850C



Specifications

Temp. Range:	RT +5~60 °C
Temp. Resolution:	0.1 °C
Dry Heat:	100 °C
Temp. Control:	Digital PID
CO ₂ Range:	0% ~ 20%
CO ₂ Accuracy:	±0.1% (5% / 37 °C)
CO ₂ Resolution:	0.1%
CO ₂ Sensor:	IR CO ₂ Sensor
Display and Control:	LED display button control
IP code:	IP20
Operating panel:	Individual 2-Channel Touch Button
Jacket type:	Air Jacket Type (6 sides heat)
Chamber material:	Stainless Steel (304)

Model	WCI-850C	
Order No.	Standard	W6011851
	Sterilization	W6012851
Chamber volume [L]	850	
Temperature Stability [°C]	±0.1 (37 °C)	
Temp. Uniformity [°C]	±0.5 (37 °C / RT.20 °C)	
Heating Capacity [W]	1400	
CO ₂ Inlet pressure range [bar]	0.7 ~ 1.0	
Number of shelves	5	
Chamber dimensions [W x D x H (mm)]	700x800x1530	
Overall dimensions [W x D x H (mm)]	860x971x1859	
Weight [kg]	280	

Mega Constant Temperature Incubator

Large-capacity constant temperature incubators for high-throughput cultivation and multi-device placement. The optimized heating system and high-efficiency air circulation ensure uniform temperature distribution throughout the chamber.



Features

- > Five-side direct heating system for stable temperature uniformity and rapid heat-up/recovery
- > Three independently powered internal sockets are built in as standard (quantity customizable). Each socket is separately fused and operates independently of the chamber power supply
- > Built-in bottom rails allow easy installation, positioning, and movement of roller culture devices
- > 30mm Access Port is located in the middle of the right side of the chamber, facilitating sampling, subculturing, process monitoring, and equipment validation
- > The independent over-temperature protection device cuts off heating upon reaching the safe temperature



WH-1200



WH-2000

Specifications

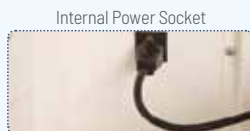
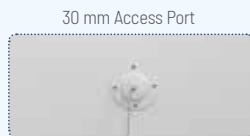
Model	WH-850X	WH-1200	WH-2000
Order No.	W6031851	W6031122	W6031202
Display and Control	LED display button control	LED display button control	LED display button control
Chamber volume [L]	850	1200	2000
Temperature range [°C]	RT +5 ~ +65 (RT 25 °C)	RT +7 ~ +60 (RT 25 °C)	RT +7 ~ +60 (RT 25 °C)
Temp. Uniformity [°C]	±0.5 at 37 °C (RT 25 °C)	±0.5 at 37 °C (RT 25 °C)	±1 at 37 °C (RT 25 °C)
Heating Capacity [W]	1400	1600	2800
Temperature Stability [°C]	±0.1 (at 37 °C)	±0.1 (at 37 °C)	±0.1 (at 37 °C)
Built-in alarm settings	Temperature / Open the door		
Shelves [included / max.]	0/26	0/35	0/12
Number of internal power sockets	2	3	2
Communication interface	RS-232/485	RS-232/485	RS-232/485
Door	Left-opening door	Left-opening door	Center-opening door
Chamber dimensions [W x D x H (mm)]	840x700x1590	868x720x1927	1240x870x2000
Overall dimensions [W x D x H (mm)]	993x887x1911	990x855x2123	1695x1098x2291
Chamber Material	SUS 304 Stainless steel		
Power supply	220V / 50 or 60Hz		

Mega CO₂ Incubator

Large-capacity CO₂ incubators designed for high-density cell culture, multi-device integration, and uniform temperature/CO₂ distribution throughout the chamber.

Features

- > Five-side direct heating system
- > High-precision PID temperature control
- > Dual-beam IR CO₂ sensor
- > Internal independently powered sockets
- > Built-in roller rail design
- > Access port for sampling and validation
- > Dual-beam IR CO₂ sensor for fast and accurate CO₂ measurement independent of temperature and humidity



WCI-2000



Specifications

Model	WCI-850	WCI-1200	WCI-2000
Order.No	W6011851X	W6011122	W6011142
Display and Control	LED display button control	LED display button control	LED display button control
Chamber volume [L]	850	1200	2000
Temperature range [°C]	RT +5 ~ +60 (RT 25 °C)		
Temp. Uniformity [°C]	±0.5 at 37 °C (RT 25 °C)	±0.5 at 37 °C (RT 25 °C)	±1 at 37 °C (RT 25 °C)
Heating power [W]	1400	1600	2800
Temperature Stability [°C]	±0.1 (at 37 °C)		
CO ₂ Range	0 ~ 20%		
CO ₂ Sensor	IR CO ₂ Sensor		
CO ₂ Accuracy	±0.1% at 5%		
Safety Settings	Independent Over-Temperature Protection Cut-Off		
Built-in alarm settings	Temperature / CO ₂ / Open the door		
Shelves [included / max.]	0/26	0/35	0/12
Number of internal power sockets	2	3	2
Communication interface	RS-232/485	RS-232/485	RS-232/485
Door	Left-opening door	Left-opening door	Center-opening door
Chamber dimensions [W x D x H (mm)]	840x700x1590	868x720x1927	1240x870x2000
Overall dimensions [W x D x H (mm)]	993x887x1911	1150x918x2128	1700x1100x2260
Chamber Material	SUS 304 Stainless steel		
Power supply	220V / 50 or 60Hz		

CO₂ Incubator Accessories

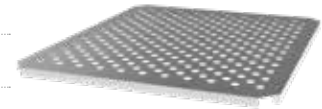
Order No.	Part	Description	Suitable for
W 6031221	Perforated shelf kit	Max. load up to 25kg	WH-1200 / WCI-1200
W 6031222	Reinforced perforated shelf kit	Max. load up to 50kg	WH-1200 / WCI-1200
W 6051502	Inner power socket	Three-jack socket, 220 V, for power supply inside the chamber, not exceed 1000 W	All series incubator



WH/WCI-2000 series shelf kits offer customization service

CO₂ Incubator Accessories

Order No.	Item	Description	Suitable for
Incubator shelf for holding cultures in the chamber			
189231	Stainless steel shelf		WCI-15R
W6010401	Perforated Shelf kit	Perforated shelf to improve uniformity, Stainless steel material can effectively resist corrosion and pollution, load 15kg	WCI-40 series
W6011201	Perforated Shelf kit	Perforated shelf to improve uniformity, Stainless steel material can effectively resist corrosion and pollution, load 15kg	WCI-120 series
W6011801	Perforated Shelf kit	Perforated shelf to improve uniformity, Stainless steel material can effectively resist corrosion and pollution, load 15kg	WCI-180 series
W6011801-U	Reinforced perforated shelf kit	Perforated shelf to improve uniformity, Stainless steel material can effectively resist corrosion and pollution, load 50kg	WCI-180 series
W6011801-Cu	Perforated Shelf kit	Perforated shelf to improve uniformity, Copper material can effectively resist corrosion and pollution, load 15kg	WCI-180Cu
W6011801-Cu-U	Reinforced perforated shelf kit	Perforated shelf to improve uniformity, Copper material can effectively resist corrosion and pollution, load 50kg	WCI-180Cu
W6012601	Perforated Shelf kit	Perforated shelf to improve uniformity, Stainless steel material can effectively resist corrosion and pollution, load 15kg	WCI-260
W6012601-U	Reinforced perforated shelf kit	Perforated shelf to improve uniformity, Stainless steel material can effectively resist corrosion and pollution, load 50kg	WCI-260
W6016501	Perforated Shelf kit	Perforated shelf to improve uniformity, Stainless steel material can effectively resist corrosion and pollution, load 15kg	WCI-650
W6016501-U	Reinforced perforated shelf kit	Perforated shelf to improve uniformity, Stainless steel material can effectively resist corrosion and pollution, load 50kg	WCI-650
W6018501	Perforated Shelf kit	Perforated shelf to improve uniformity, Stainless steel material can effectively resist corrosion and pollution, load 15kg	WCI-850
W6018501-U	Reinforced perforated shelf kit	Perforated shelf to improve uniformity, Stainless steel material can effectively resist corrosion and pollution, load 50kg	WCI-850
W6011851X1	Perforated Shelf kit	Perforated shelf to improve uniformity, Stainless steel material can effectively resist corrosion and pollution, load 15kg	WCI-850X
W6011851X1-U	Reinforced perforated shelf kit	Perforated shelf to improve uniformity, Stainless steel material can effectively resist corrosion and pollution, load 50kg	WCI-850X
Roller Base (Installed beneath the incubator for easier movement)			
W6010402	Roller base	To move incubator easily	WCI-40 series
W6010602	Roller base	To move incubator easily	WCI-120 series
W6011802	Roller base	To move incubator easily	WCI-180 series
Stacking Kit (For safe stacking and positioning of incubators)			
W6011803	Stacking kit	To stack and fix the incubator	WCI-180
W6012603	Stacking kit	To stack and fix the incubator	WCI-260
HEPA Filter (For gas circulation filtration)			
W6011804	HEPA	Set at the gas supply inlet to ensure the cleanliness of the gas in the incubator	WCI-40 / 120 / 180
W6011204	HEPA		WCI-260
W6018504	HEPA		WCI-650 / 850
Water tray (Used for humidification during culture to reduce medium evaporation)			
W6010405	Water tray	Moisture is generated by heating the Water tray at the bottom, which is filled throughout the chamber by a circulating fan	WCI-40 / 120
W6011805	Water tray	Moisture is generated by heating the Water tray at the bottom, which is filled throughout the chamber by a circulating fan	WCI-180 / 180T / 180R/S
W6012605	Water tray	Moisture is generated by heating the Water tray at the bottom, which is filled throughout the chamber by a circulating fan	WCI-260
W6016505	Water tray	Moisture is generated by heating the Water tray at the bottom, which is filled throughout the chamber by a circulating fan	WCI-650 / 850



Roller base

Stacking kit



HEPA



Water tray

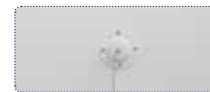
Order No.	Item	Description	Suitable for
UV lamp			
W6011806	UV lamp	A 4W UV lamp is placed at the top of the chamber, next to the circulating fan. UV rays do not radiate the sample and can be sterilized during culture.	All series incubator (The operating temperature should not exceed 60 °C)
Software			
W6011809	Monitoring system	PC-based monitoring software for remote real-time monitoring of incubator operating status	All series incubator
W6011809-01	Connecting wire	With anti-shedding interface for PC to the incubator, unit/m	All series incubator
Airway			
W6011810	Gas regulator	For pressure regulation from the air supply to the chamber	All series incubator
W6011816	Access port for auxiliary monitoring	Diameter of 30mm (40mm customizable), for sampling, experimental verification and penetration of additional equipment power or signal cables in the incubator	All series incubator
189232	Measuring hole	Used for measure sensor access on the side of the incubator	WCI-15R
WCI180065	Tubing	Outer diameter 6mm, inner diameter 4mm for CO ₂ tubing. Unit/meter	All series incubator
ZFC100-06	Filter	For incubator inlet air filtration, CO ₂ filter	All series incubator
Divided door: To Reduce chamber's environmental changes when the door is opened			
W6011812	Divided door	5-Split Door glass door for easy individual experimental operations	WCI-40/40T
W6011813	Divided door	3-Split Door glass door for easy individual experimental operations	WCI-180/180T
W6011814	Divided door	6-Split Door glass door for easy individual experimental operations	WCI-180/180T
W6012606	Divided door	3-Split Door glass door for easy individual experimental operations	WCI-260
W6012607	Divided door	6-Split Door glass door for easy individual experimental operations	WCI-260
W6016506	Divided door	3-Split Door glass door for easy individual experimental operations	WCI-650
W6016507	Divided door	5-Split Door glass door for easy individual experimental operations	WCI-650
W6018506	Divided door	3-Split Door glass door for easy individual experimental operations	WCI-850
W6018507	Divided door	5-Split Door glass door for easy individual experimental operations	WCI-850
Printer / Power supply / LED lamp			
W6011815	Stylus printer	To print incubator data	All series incubator
W6051502	Power socket in chamber	Three-jack socket, 220 V, for power supply inside the chamber, not exceed 1000 W	All series incubator
W6051503*	LED lamp	Installed on the top of the chamber, with an independent lighting switch	All series incubator



UV lamp



Connecting wire



Access port for auxiliary monitoring



Filter



*The temperature must not exceed 40 °C when LED lamp is present

Shaker Incubator
Shaker CO₂ Incubator
Roller Rack CO₂ Incubator



Shaker Incubator

Combining incubation/refrigeration with dual shaking modes, the WS series supports a wide range of biological and biotechnology applications.

Shaking Features

- > Dual shaking modes: orbital or reciprocal
- > Speed range: 30 to 300 rpm
- > Programmable shaking motion
 - Timer range: 10 sec to 999 hr 59 min 59 sec
 - Forward & Backward, Pause: 10 sec to 59 min 59 sec
- > Selectable shaker throw: 20, 30, 40mm



Operating Features

- > Microprocessor PID control
- > High temperature limit setting and open door alarm
- > Convenient preset function for 3 most commonly used temperature settings
- > Up to 9 temperature steps and maximum 200 cycles of repetition and programmable for each profile
- > Intuitive control panel with bright LED display (0.1 °C resolution) and push button keypad
- > RS-232 interface



Optional Accessories

- > Universal / Dedicated Platforms, Rubber Mats, Universal Attachments
- > Flask Clamps, Funnel Clamps
- > Test Tube Racks, Spring Wire Racks
- > Microplate Holders (three styles)

Constructional Features

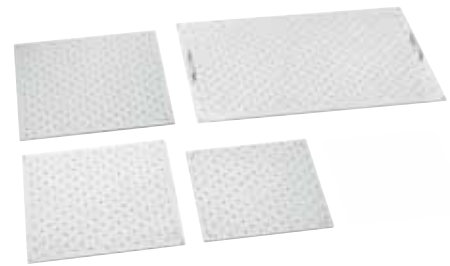
- > Maintenance-free and durable BLDC motor
- > High-velocity fan ensuring uniform temperature distribution and rapid thermal recovery
- > Convenient sample monitoring thanks to the transparent acrylic lid and the fluorescent lamp
- > Gas-spring-supported lid for smooth opening, soft closing, and stable positioning
- > Environmentally friendly, CFC-free refrigerant

Specifications

Product Name	WS-300	WS-300R	WS-600	WS-600R	
Volume (L)	53	53	83	83	
Temperature	Range [°C]	RT +5 ~ 60	15 ~ 60	RT +5 ~ 60	15 ~ 60
	Accuracy [°C]	±0.1 (37 °C)	±0.1 (37 °C)	±0.1 (37 °C)	±0.1 (37 °C)
	Stability [°C]	±1.0 (37 °C)	±1.0 (37 °C)	±1.0 (37 °C)	±1.0 (37 °C)
	Controller	Push button keypad, Digital Display with PID automatic regulation			
	Heater	Heating Plate, 800 W			
	Timer	Start / Stop / Duration setting; 10sec ~ 999hr 59min 59sec			
Shaker	Controller	PID automatic regulation			
	Power Unit	Brushless motor			
	Methods	Orbital Standard, Reciprocating (Option)			
	Shaking Throw [mm]	20, 30 (standard), 40	20, 30 (standard), 40	20, 30 (standard), 40	20, 30 (standard), 40
	Speed [rpm]	30 ~ 300	30 ~ 300	30 ~ 300	30 ~ 300
	Stability [rpm]	± 1 (at 150 rpm)	± 1 (at 150 rpm)	± 1 (at 150 rpm)	± 1 (at 150 rpm)
Dimensions	Platform [W x D (mm)]	350x350	350x350	450x450	450x450
	Inside [W x D x H (mm)]	410x410x320	410x410x320	510x510x320	510x510x320
	Outside [W x D x H (mm)]	438x737x624	438x737x624	573x839x624	573x839x624
IP code	IP30	IP30	IP30	IP30	
Net Weight [kg]	74	85	91	102	
Max. Load [kg]	10	10	15	15	
Order No.	W6091050	W6095050	W6091080	W6095080	

Standard includes shaker only. Tray need to be ordered separately.
 Optional natural refrigerant version available
 For ordering, please add "N" after the ordering number

Accessories for Shaker Incubator



Sticky Tray

The WIGGENS sticky tray can accommodate any type of vessel with a smooth base. Even at speeds of up to 220 rpm, the vessel remains securely adhered to the plate.

Suitable for	WS-300/300R	WS-600/600R
Order No.	31901	31902
Dimensions (W x D in mm)	350x350	450x450
Sticky (singal piece) (need 4 pieces for replacement on the tray)	31901-1	31902-1
Tray (Without sticky pieces)	31901-2	31902-2

Sticky plate includes: Tray, 4 pieces of stickies.

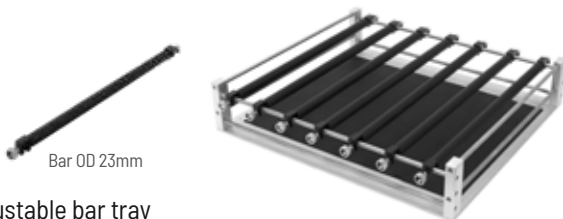


Multi-Purpose Tray

The multi-purpose tray is made of stainless steel and can be used for a diverse range of unusual specifications.

Suitable for	WS-300/300R	WS-600/600R
Order No.	31521	31522
Dimensions (W x D in mm)	350x350	450x450
Max. Load of Flasks		
50ml	16	25
100ml	9	16
250ml	4	9
300ml	4	9
500ml	4	5
1L	2	4
2L	1	2
2.8L	1	2

Multi-Purpose tray includes: Tray, Springs.



Adjustable bar tray

Suitable for	WS-300/300R	WS-600/600R
Order No.	31514	31515
Dimensions (W x D in mm)	300x300	400x400
Number of bar	3	3
Order No. of bar	31514-05	31515-05

Adjustable bar tray includes, 3 pieces of bars.

Universal Tray

The Universal Trays employ a drilled grid for individual loadings of test tube holders, microtitre plates, and deep well plates.

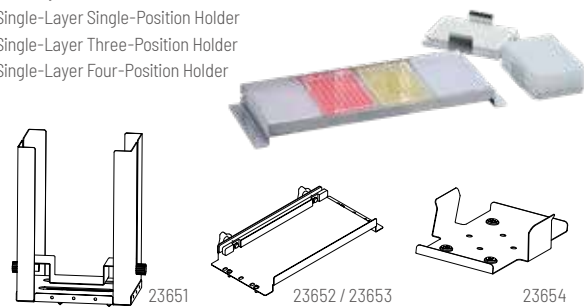
Suitable for	WS-300/300R	WS-600/600R
Order No.	31501	31502
Dimensions (W x D in mm)	350x350	450x450
Max. Load of Flask Clamps		
50ml	28	45
100ml	24	36
250ml	13	18
300ml	13	18
500ml	10	13
1L	5	7
2L	4	5
2.8L	1	2
Max. Load of Separatory Funnel Clamps		
250ml	4	6
500ml	2	3
1L	-	2

Universal tray includes: Tray. Clamps need to be ordered separately.

Multi-Pore Holders

The Wiggins multi-pore holders can be installed on the Wiggins sticky plates or the Wiggins universal trays. All holders can be installed on small pores and deeper holes. In total, four different multi-pore holders are available:

1. Multi-Layer Holder
2. Single-Layer Single-Position Holder
3. Single-Layer Three-Position Holder
4. Single-Layer Four-Position Holder



Max. No. of Mountable Holders	Multi-Layer	Four-Position	Three-Position	Single-Position
Order No.	23651	23652	23653	23654
Max. mountable holders				
WS-300/300R	6	-	2	8
WS-600/600R	10	2	3	15



Rubber mat

Designed for low-speed applications, non-skid rubber mats allow quick addition or removal of flasks, plates or tubes.

Suitable for	WS-300/300R	WS-600/600R
Order No.	31531	31532
Dimensions(W x D x H mm)	352x352x23	450x450x23



Separatory funnel clamp

Funnel Volumes	250ml	500ml	1L	2L
Order No.	23562	23563	23564	23565
	152x60	165x70	230x80	255x90



Erlenmeyer flask clamp

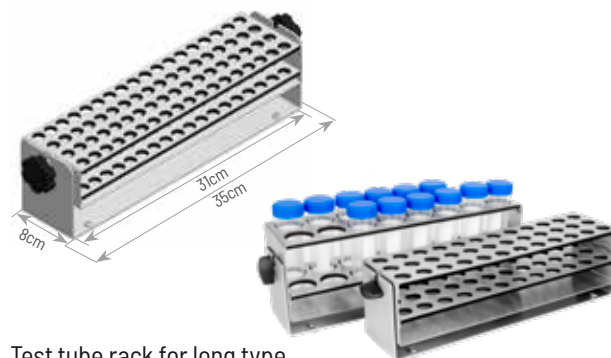
Size of flask	Order No.
25ml	23549
50ml	23550
100ml	23551
250ml	23552
300ml	23556
500ml	23553
1000ml	23554
2000ml	23555
2800ml Fernbach	23557
3000ml	23560
4000ml	23558
5000ml	23561
6000ml	23559

Plastic clamps for erlenmeyer flask

Order No.	Description	Order No.	Description
31285	100ml	31287	500ml
31286	250ml		

Stainless steel clamps for fernbach flask

Order No.	Description	Order No.	Description
31283	1.8L	31284	2.8L



Test tube rack for long type

Order No.	Description	Order No.	Description
31342	144 x Ø8mm	31356	39 x Ø18mm
31343	100 x Ø10mm	31358	36 x Ø20mm
31347	72 x Ø12mm	31359	33 x Ø22mm
31352	64 x Ø14mm	31360	20 x Ø25mm
31354	36 x Ø16mm	31361	16 x Ø30mm

Test tube rack for short type

Order No.	Description
31348	72 x Ø12mm
31353	64 x Ø14mm
31357	39 x Ø18mm (Suitable for Greiner Bio-one tube)

Rack for plastic test tube

Order No.	Description
31355	36x Ø16mm (15ml)
31362	16x Ø30mm (50ml)

187mm test tube rack for short type

Order No.	Description	Order No.	Description
31344	44 x Ø12mm	31349	21 x Ø20mm
31346	24 x Ø18mm		

Shaker Incubator

Laboratory space is both limited and costly. The WSI series successfully combines flexibility, user-friendly operation, and operational safety with optimal space utilization. Its modular construction and downward-opening door allow it to function as a standalone unit for use on or under the laboratory bench, or as part of a stacked system.

Features

- > Easy to complete the stacking process
- > Electromagnetic drive technology ensures stable shaking with low noise
- > Integrated shaking unit accommodates flasks with a volume of up to 2 liters
- > The opening direction of the outer door can be switched for flexibility
- > Built-in circulation fan ensures uniform temperature distribution
- > Stainless steel chamber is easy to clean. Alarm for temperature deviations, speed deviations, or when the door is open
- > Independent safety temperature control prevents overheating
- > A variety of optional accessories are available
- > WSI-50R adopts Peltier cooling



Specifications

Model		WSI-50	WSI-50R
Temperature	Range [°C]	RT+7 ~ 60 (25 °C)	RT-10 ~ 60 (25 °C)
	Accuracy [°C]	±0.1	±0.1
	Uniformity [°C]	±0.5 (at 37 °C)	±0.5 (at 37 °C)
Shaking (Optional)	Speed [rpm]	20 ~ 300	20 ~ 300
	Accuracy	± 1%FS	± 1%FS
	Amplitude [mm]	25	25
Chamber Volume		71 L	71 L
Platform [W x D (mm)]		300x330	300x330
Capacity		100mlx16	100mlx16
		250mlx9	250mlx9
		500mlx5	500mlx5
		1000mlx4	1000mlx4
Dimensions [W x D x H (mm)]	1 deck	453x530x625	470x599x625
	2 decks	453x530x1250	453x530x1250
	IP code	IP30	IP30
Two layers weight [kg]		110	140

Standard includes the Incubator, SRC shaker. The tray need to be ordered separately.

Roller Rack CO₂ Incubator

WIGGENS CO₂ incubator with a roller apparatus or shaker inside the chamber, designed for the culture of adherent cells. All operations and controls are conveniently located on the external control panel. It includes all the features of the WCI-180.

Features

- > 180 L CO₂ incubator with built-in roller apparatus
- > Low-noise, low-vibration brushless DC motor
- > Uniform temperature, CO₂ concentration, and humidity throughout the chamber
- > Removable roller apparatus for easy cleaning and maintenance
- > External speed controller for operation without opening the door



Accommodates four roller bottles with diameters of 100-120 mm. The speed controller is mounted externally. The external controller allows speed monitoring and adjustment without opening the incubator door.

Specifications

Model		WCI-180R
Display of the incubator		LED
Chamber Volume [L]		180
Temperature	Range [°C]	RT+5-60
	Display Precision [°C]	±0.1 (37 °C)
	Resolution [°C]	0.1
Speed control	Speed [rpm]	0.2 ~ 8.1
	Accuracy [rpm]	±1
	Resolution [rpm]	0.1
	Control	PID microprocessor
Humidity		≤70% (at 37 °C)
CO ₂	accuracy	±0.1% (5% / 37 °C)
	Resolution	0.1%
	Sensor	Dual infrared CO ₂ sensor
	Control	PID microprocessor
Timer (Roller)		Continuous or up to 99h 59min
Jacket style		Air-jacket, six-side heating
Chamber Material		304 stainless steel
Shelf		One for roller apparatus, and above space for static culture
Order No.		W6026180

Standard includes the Incubator, Water tray, Shelf, Roller.



Celrol Mini

Shaker CO₂ Incubator

WIGGENS CO₂ incubator with a shaker inside the chamber, designed for the culture of adherent cells. All operations and controls are conveniently located on the external control panel. It includes all the features of the WCI-180.

Features

- > 180 L CO₂ incubator with an integrated shaker apparatus
- > Low noise operation with a low-vibration DC brushless motor
- > Uniform CO₂ concentration, humidity, and temperature throughout the chamber
- > Compatible with various plate types, including Erlenmeyer flasks (100 mL, 250 mL, 500 mL, 1000 mL), test tube clamps, and 96-well plates
- > External controller allows individual control of internal shaker, with speed displayed on the remote controller
- > Temperature and CO₂ levels are monitored and adjusted via the LED screen

Flasks with volumes ranging from 100 to 1000 mL can be placed on the internal shaker. The brushless DC motor ensures low vibration, dust-free operation, and minimal noise, making it ideal for cell culture.



More information, please refer to shaker SRC



WCI-180CH

Please note: the sticky tray shown in the image must be ordered separately.

Specifications

Model		WCI-180S	WCI-180CH
Application		Incubator and shaker can be separate for Independent use	Integrated version
Display		LED	LED
Chamber Volume [L]		180	180
Platform Size [W x D (mm)]		300x330	300x330
Temperature	Range [°C]	RT+5 ~ 60	RT+5 ~ 60
	Display Precision [°C]	±0.1 (37 °C)	±0.1 (37 °C)
	Resolution [°C]	0.1	0.1
Speed control	Speed [rpm]	30 ~ 300	30 ~ 300
	Accuracy [rpm]	±1	±1
	Resolution [rpm]	1	1
	Control	PID microprocessor	PID microprocessor
Humidity		≥70% (at 37 °C)	≥70% (at 37 °C)
CO ₂	Accuracy	±0.1% (5% / 37 °C)	±0.1% (5% / 37 °C)
	Resolution	0.1%	0.1%
	Sensor	Dual infrared CO ₂ sensor	Dual infrared CO ₂ sensor
	Control	Microprocessor	Microprocessor
Jacket style		Air-jacket, six-side heating	Air-jacket, six-side heating
Interior material		304 stainless steel	304 stainless steel
Shelf		One for shaker	One for shaker
Order No.		W6027180	W6027181

Standard includes the Incubator, Water tray, Shelf, Shaker. The tray for shaker need to be ordered separately.

Shaker CO₂ Incubator

WIGGENS shaker CO₂ incubator is ideal for applications in biosimilar production, proteomics, crystallography, genomics, cell biology, and new drug development. This large-capacity CO₂ incubator features separable, long-life shakers, providing an optimal solution for cell suspension culture.

The internal chamber is divided into three compartments, each equipped with a separable orbital shaker designed to hold Erlenmeyer flasks, cylindrical flasks, or deep-well blocks. A dual beam infrared sensor ensures precise CO₂ control, while a six-side heating system guarantees excellent temperature control, recovery, and humidity management. An advanced air circulation system maintains temperature uniformity across all compartments.

The uniquely patented orbital shakers are made of stainless steel to minimize contamination and facilitate easy cleaning. The well-sealed plate-type magnetic drive motor allows these shakers to operate reliably in highly humid environments without generating noise, vibration, or particulates. These powerful shakers are built for long-term use, ensuring consistent performance and reliability.



Features

Cell suspension culture

The shaker CO₂ incubator is designed for the suspension culture of eukaryotic cells, such as CHO, HEK, and HeLa; however, it can also be used as a static incubator if required.

Infrared sensor

Industry standard dual beam infrared sensor is used to maintain control of CO₂ density

Pullout shaker platform

The platform of each shaker can be pulled out for efficiently loading flasks on each shaker.

Sticky mat & various holders

The orbital shakers can be used with sticky mats, dedicated flask holder trays, or universal flask/tube holder plates.

Individual shaker control

Each orbital shaker can be individually controlled using an external control panel.

Excellent temperature control

All six sides are directly heated and integrated with PID control to ensure rapid temperature attainment and consistent uniformity. Additionally, the system employs both forced air and natural convection to maintain optimal temperature uniformity at all times.

High and natural humidification

A deep and wide humidity tray allows high and natural humidity to be generated.

Split inner glass doors

The internal chamber is divided into three compartments, each equipped with its own shelf, shaker, and glass door. This design minimizes excessive heat and CO₂ loss when removing flasks and other items.

Humidity display (option)

The LED display shows the actual humidity levels in the chambers, notifying the user when it is time to replenish the water in the humidity tray.

Auto restart function

Each shaker is equipped with an auto-start/stop function. It stops when the inner glass door of its compartment is opened and restarts automatically once the door is closed. The auto-restart also activates after a power outage.

UV lamp (option)

The UV lamp located next to the circulation fan can sterilize the air in the incubator even during the cell culture process. The UV lamp can be turned on or off using an external switch.

Stain resistant interior

The inner chamber and all orbital shakers are crafted from SUS304 stainless steel, a material chosen for its suitability in GMP facilities and corrosion resistance in high-humidity environments.

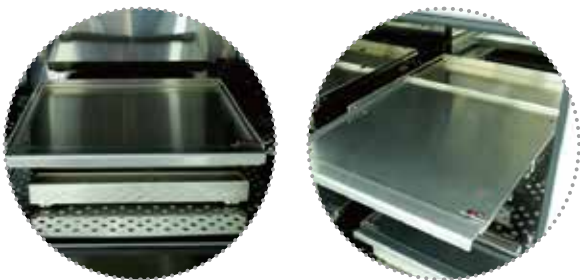
Anti-bacterial filter

A HEPA filter, positioned after the circulation fan, captures airborne microbes to maintain a sterile environment.

Specifications

Model		WCI-650CH	WCI-850CH	
Display		LED	LED	
Chamber volume [L]		650	850	
Temp.	Range [°C]	Ambient +5 ~ 60	Ambient +5 ~ 60	
	Accuracy [°C]	±1 (at 37 °C)	±1 (at 37 °C)	
Shaker	Shaking motion	Orbital	Orbital	
	Speed range [rpm]	30 ~ 300	30 ~ 300	
	Speed accuracy [rpm]	±1	±1	
	Speed increment [rpm]	1	1	
	Orbit diameter [mm]	25	25	
Humidity with water tray		≥70% (at 37 °C)	≥70% (at 37 °C)	
CO ₂	Range	0-20%	0-20%	
	Accuracy	±0.3% (at 5% at 37 °C)	±0.3% (at 5% at 37 °C)	
	Sensor	IR CO ₂ sensor	IR CO ₂ sensor	
	Inlet pressure [bar]	0.7 ~ 1.0	0.7 ~ 1.0	
Time	Time range	Continuous or up to 99h59min	Continuous or up to 99h59min	
	Time accuracy	±1%	±1%	
	Time increment [min]	1	1	
Jacket type		Air jacket type (6-side heating)	Air jacket type (6-side heating)	
Filter		Anti-Bacterial HEPA filter	Anti-Bacterial HEPA filter	
Sterilization (option)		U.V 4Wx1ea	U.V 4Wx1ea	
Shelves		3ea	3ea	
Dimensions	Chamber dimensions [W x D x H (mm)]	700x650x1430	700x800x1530	
	Platform size [W x D (mm)]	520x520	520x520	
	Compartment dimensions [W x D x H (mm)]	Compartment 1 (Bottom)	700x650x430	700x800x410
		Compartment 2, 3 (Middle,Top)	700x650x380	
		Overall dimensions [W x D x H (mm)]	855x816x1763	
IP code		IP20	IP20	
Weight [kg]		32.3	39.3	
Power		220 V, 50 / 60 Hz	220 V, 50 / 60 Hz	
Order No.		W6027650	W6027850	

Standard includes the Incubator, Water tray, 3 shakers with sticky tray.



Maximum allowance for flask capacity

WCI-650CH	WCI-850CH
100ml x 156	100ml x 156
250ml x 90	250ml x 90
500ml x 60	500ml x 60
1000ml x 48	1000ml x 48
2000ml x 9	2000ml x 27

For optimum performance under maximum load, a shaking speed of 150 rpm is recommended.

Universal Tray

The Universal Trays employ a drilled grid for individual loadings of test tube holders, microtitre plates, and deep well plates.



Suitable for	WCI-650CH / WCI-850CH
Order No.	W6100402
Dimensions [W x D (mm)]	520x520

Sticky Tray

WIGGENS Sticky tray can accommodate any type of vessel with a smooth base. Even at speeds of up to 300 rpm, vessels remain securely adhered to the plate. Additionally, microtiter plates can also be shaken on the WIGGENS Sticky Plate, but only at speeds up to 220 rpm.



Suitable for	WCI-650CH / WCI-850CH
Order No.	W6100401
Dimensions [W x D (mm)]	520x520

Multi-Purpose Tray

The multi-purpose tray is made of stainless steel springs and can be used for a diverse range of unusual specifications.



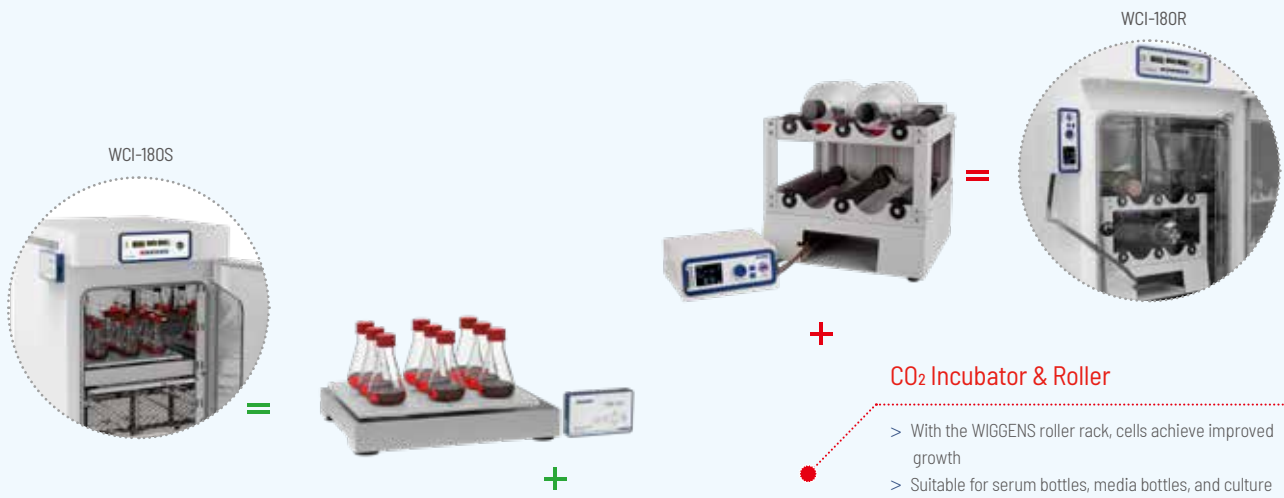
Suitable for	WCI-650CH / WCI-850CH
Order No.	W6100403
Dimensions [W x D (mm)]	520x520



Erlenmeyer Flask Clamp

Size of flask	Order No.
25ml	23549
50ml	23550
100ml	23551
250ml	23552
300ml	23556
500ml	23553
1000ml	23554
2000ml	23555
2800ml Fernbach	23557
3000ml	23560
4000ml	23558
5000ml	23561
6000ml	23559

Biomix for CO₂ Incubators



- > With the WIGGENS roller rack, cells achieve improved growth
- > Suitable for serum bottles, media bottles, and culture tubes
- > Suitable for cell culture or staining process
- > Speed range from 0.2~8.1 rpm

CO₂ Incubator & Shaker

- > Improves cell growth through continuous and uniform mixing
- > Enhances oxygen transfer efficiency
- > Reduces medium gradients through effective mixing
- > Minimizes cell sedimentation and accumulation in suspension culture



CO₂ Incubator & Biological Culture

- This biological culture system uses a semi-permeable membrane to separate the cell compartment from the medium compartment, helping overcome the limitations of conventional culture systems related to oxygen transfer, nutrient supply, and metabolite accumulation. It supports high-density culture and high-concentration product expression.
- > A disposable cell culture device that is ready for use at any time
 - > Reduces consumable usage
 - > Supports high cell density and product concentration
 - > Stackable design for efficient space-saving
 - > Time-saving design that eliminates the need for external equipment

CO₂ Incubator & Magnetic Stirrer

- > With a specialized magnetic stirrer and vessel, cells achieve improved growth
- > IP68 class, ensuring a long service life
- > Remote speed control system
- > Low heat dissipation minimizes interference with chamber temperature and CO₂ control

Shaker for CO₂ Incubator

SRC / CRC / MRC

This compact shaker offers benefits such as a small footprint and easy mobility. The non-belt magnetic drive ensures low noise and low vibration. Despite its compact size, it delivers powerful shaking and has a spacious platform for various vessels.



Celshak®



Specification

Model	SRC	CRC	MRC
Motion	Orbital		
Control	Microprocessor Digital		
Motor	Plate BLDC motor		
Drive System	Direct Magnetic Drive		
Display	LED display		
Speed Range[rpm]	30 ~ 300	30 ~ 300	30 ~ 300
Accuracy[rpm]	±1	±1	±1
Shaking Throw[mm]	25 / 50	25 / 50	25 / 50
Time Range	Continuous or up to 99 hours 59min		
Time Increment	1min		
Shaker size [W x D x H (mm)]	302x357x99	496x414x120	519x465x132
Weight [(25/50mm) Kg]	7.5 / 11.5	20 / 20	25 / 25
Tray Size[W x D (mm)]	300 x 330	440x370	455 x 455
IP code	IP21	IP21	IP21
Control box Size [W x D x H (mm)]	162x100x30 / 0.5		
Power	100-240V 50/60HZ		
Load Capacity	100ml x 16	100ml x 23	100ml x 36
	250ml x 9	250ml x 10	250ml x 23
	500ml x 5	500ml x 6	500ml x 16
	1000ml x 4	1000ml x 5	1000ml x 9
	2000ml x 1	2000ml x 2	2000ml x 4
Order No. (25mm)	W6100100	W6100200	W6100300
Order No. (50mm)	W6100150	W6100250	W6100350

Standard includes shaker only. Tray need to be ordered separately.

Features

Gentle magnetic drive

The non-belt magnetic drive design allows for high water resistance performance. This gentle drive unit features exceptionally smooth start-up and braking behavior, making it particularly suitable for cell cultures.

Made of stainless steel

The entire housing of the shaker is made of stainless steel (SUS304), meeting GMP cleaning requirements. It allows for easy removal of unwanted liquids and can be cleaned with chemicals.

No gas leaks

The thin connection cable can pass through the sealed inner glass door area without requiring an additional access port, helping maintain chamber sealing integrity.

Magnetic Remote Controller Placement

Depending on the material type of the incubator or the situation of the lab, placing remote controller is available with integrated magnets.

Accessories

Order No.	Name
Suitable for SRC	
W6100101	Sticky Tray
W6100102	Universal Tray
W6100103	Multi-Purpose Tray
W6100104	Microplate Rack
Suitable for CRC	
W6100201	Sticky Tray
W6100202	Universal Tray
W6100203	Multi-Purpose Tray
W6100204	Microplate Rack
Suitable for MRC	
W6100301	Sticky Tray
W6100302	Universal Tray
W6100303	Multi-Purpose Tray
W6100304	Microplate Rack



Sticky Plate



Universal Tray



Multi-Purpose Tray



Microplate Rack

Cell Culture Roller Rack

The WIGGENS cell culture roller rack, available in the Celrol Mini and Celrol Mid models, offers high operational flexibility for use both inside an incubator and on a work table. A remote control box can be conveniently attached to the incubator surface, and the flat cable does not require special installation measures, such as an access port. The Celrol Mini accommodates up to four 2000 mL bottles, while the Celrol Mid can hold six 2000 mL bottles simultaneously. With a speed range of 0.2 to 8.1 rpm, these racks are designed to optimize the performance of adherent cell cultures.

Features

- > Steel-reinforced polyurethane timing belts
- > Brushless DC motor
- > Powder-coated aluminum for durability and cleanliness
- > Non-slip rubber material for optimal rolling performance
- > Drive-belt design eliminates idle rollers for consistent bottle rotation



Specifications

Model	Celrol Mini	Celrol Mid
Speed range [rpm]	0.2-8.1	0.2-8.1
Accuracy [rpm]	0.1	0.1
Increment [rpm]	0.1	0.1
Control	Microprocessor digital PID	Microprocessor digital PID
Time Range	Continuous or up to 999h 59min	Continuous or up to 999h 59min
Display	LED Display	LED Display
Motor type	Brushless DC motor	Brushless DC motor
Bottle diameter [mm]	110 to 120 4ea	110 to 120 6ea
Roller deck dimensions [W x D x H (mm)]	362×299×212	362×299×412
Overall dimensions [W x D x H (mm)]	384×393×354	384×393×524
Bottle Positions	4	6
Decks	2	3
Power	220 V, 50 / 60 Hz	220 V, 50 / 60 Hz
Weight [kg]	12.5	13.5
Order No.	W6110100	W6110200

Standard includes roller rack only. Roller bottles need to be ordered separately



Celrol Mini

Outside controller

The external controller allows speed adjustment without opening the incubator door.

Cell Culture Roller Rack



Celrol Pro

- > Smooth ramping with digitally controlled rotation accurate to 0.01 rpm
- > Maintenance-free precision brushless motor
- > Bright TFT display for easy operation
- > Connectable to a printer
- > Belt break alarm

Specifications

Model	Celrol Pro
Display	TFT
Capacity	5~55 Positions
Bottle Speed (110mm Bottle) [rpm]	0.08~2.5
Diameter of roller bottles [mm]	108~121
Length of roller bottles [mm]	Max. 550
Accuracy [rpm]	0.01
Drive	Belt Driven
Motor Type	Brushless DC
Rotation Direction	Clockwise and Counter-Clockwise
Communication Interface	RS232
Humidity	80% up to 37 °C
Operating Temperature [°C]	10 to 40
Electrical	220 V, 50/60 Hz

Standard includes roller rack only. Roller bottles need to be ordered separately.

Celrol Elite

- > Robust touch screen interface, easily viewable from a distance
- > Recognizable icons for intuitive navigation
- > Digitally controlled, maintenance-free motor accurate to 0.01 rpm
- > Connectable to a printer
- > Belt break alarm

Specifications

Model	Celrol Elite / GMP
Display	SIMATIC HMI Touch Screen
Capacity	8~88 Positions 5~55 Positions
Bottle Speed (110mm Bottle) [rpm]	0.08~2.5
Diameter of roller bottles [mm]	108~121
Length of roller bottles [mm]	Max. 550
Accuracy [rpm]	0.01
Drive	Belt Driven
Motor Type	Brushless DC
Rotation Direction	Clockwise and Counter-Clockwise
Communication Interface	RS-485, Modbus RTU, RJ45, Modbus TCP and TCP/IP
Humidity	80% up to 37 °C
Operating Temperature [°C]	10 to 40
Electrical	220 V, 50/60 Hz

Standard includes roller rack only. Roller bottles need to be ordered separately.

Incubator and roller rack pairing recommendation

Layer	Celrol Pro	Celrol Elite
11		1800mm
10		1647mm ²⁾
9	1614mm ²⁾	1495mm
8	1452mm	1342mm ¹⁾
7	1291mm ¹⁾	1190mm
6	1129mm	1037mm
5	968mm	885mm
4	806mm	732mm
3	645mm	580mm
2	483mm	427mm
1	322mm	275mm

¹⁾Suitable for WH/WCI-850X

²⁾suitable for WH/WCI-1200



Ordering Information

Order No.	Position	Deck distance(cm)	Decks	Width(cm)	Depth(cm)	Height(cm)	Bottle Positions	Rack material
Celrol Pro								
WPBWRA501	5	18	1	79	63	35	5	AL
WPBWRA503	5	18	3	79	63	71	15	AL
WPBWRA505	5	18	5	79	63	107	25	AL
WPBWRA508	5	18	8	79	63	161	40	AL
WPBWRA509	5	18	9	79	63	179	45	AL
WPBNRS501	5	15	1	79	63	35	5	SS304
WPBNRS503	5	15	3	79	63	65	15	SS304
WPBNRS505	5	15	5	79	63	95	25	SS304
WPBNRS508	5	15	8	79	63	140	40	SS304
WPBNRS509	5	15	9	79	63	155	45	SS304
WPBNRS510	5	15	10	79	63	170	50	SS304
WPBNRS511	5	15	11	79	63	185	55	SS304
Celrol Elite								
WEBNRS501	5	15	1	79	63	35	5	SS304
WEBNRS503	5	15	3	79	63	65	15	SS304
WEBNRS505	5	15	5	79	63	95	25	SS304
WEBNRS508	5	15	8	79	63	140	40	SS304
WEBNRS509	5	15	9	79	63	155	45	SS304
WEBNRS510	5	15	10	79	63	170	50	SS304
WEBNRS511	5	15	11	79	63	185	55	SS304
WEBNRS809	8	15	9	120	63	155	72	SS304
WEBNRS810	8	15	10	120	63	170	80	SS304
WEBNRS811	8	15	11	120	63	185	88	SS304

Forced Convection Oven Vacuum Oven



Forced Convection Oven

The WF-G models are designed for high-temperature storage and feature a user-friendly design, making them suitable for all sterilization and drying tasks. They are ideal for drying applications that require gentle airflow.

Features

- > Microprocessor PID control and calibration
- > Over-temperature limit protection and door opening alarm
- > Conveniently preset for three commonly used temperature settings
- > Rounded inner chamber corners for easy cleaning and improved airflow
- > Stainless steel interior
- > Adjustable slide vents for controlling inner air vapor circulation



Venting valve

Regulate the air exchange between chamber and outside



Wide temperature range

Up to 250 °C / 300 °C



High temperature protection

Alarm activates when the temperature exceeds the set point



Uniform distribution

Accurate temperature control and forced convection



RS232 interface

Remote control by PC software



Specifications

Model	WF-02G	WF-12G	WF-22G
Display and Control	LED display button control		
Chamber Volume [L]	50	100	150
Temperature	Range [°C]	RT+10 ~ 250	RT+10 ~ 250
	Stability at 100 °C [°C]	0.5	0.6
Dimensions [W x D x H (mm)]	Interior	349x400x420	480x460x500
	Exterior	573x753x622	632x692x837
Number of shelves [included / max.]	2/8	2/12	2/14
IP code	IP20	IP20	IP20
Weight [Kg]	55	62	72.5
Power supply	230 V, 50 / 60 Hz	230 V, 50 / 60 Hz	230 V, 50 / 60 Hz
Order No.	Without glass window	W6061050	W6061100
	With glass window	W6061051	W6061101

Model	WF-05G	WF-10G	WF-15G	WF-25G	WF-40G	WF-72G
Display and Control	LED display button control	LED display button control	LED display button control	LED display button control	TFT touchscreen control	TFT touchscreen control
Chamber Volume [L]	50	100	150	250	400	720
Temperature	Range [°C]	RT+10 ~ 300	RT+10 ~ 300	RT+10 ~ 300	RT+10 ~ 300	RT+10 ~ 300
	Stability at 100 °C [°C]	0.5	0.5	0.5	0.5	0.5
Dimensions [W x D x H (mm)]	Interior	388x334x407	395x465x501	470x464x603	630x520x760	1080x574x840
	Exterior	606x577x746	694x655x840	694x945x656	850x845x1031	1252x895x1123
Number of shelves [included / max.]	2/6	2/8	2/14	2/11	3/11	3/16
IP code	IP20	IP20	IP20	IP20	IP20	IP20
Weight [kg]	55	62	72.5	78.5	210	250
Heating power [kW]	1.2	1.3	1.5	2.6	3.4	5.1
Power supply	230 V, 50 / 60 Hz	230 V, 50 / 60 Hz	230 V, 50 / 60 Hz	380 V	380 V	380 V
Order No.	Without glass window	W6062050	W6062100	W6062150	W6062250	W6062400
	With glass window	W6062051	W6062101	W6062151	W6062251	-

Standard includes the oven and shelves

Accessories & Options

Perforated Shelves

Stainless steel shelves are tool-free and easily removable for convenient cleaning.

Order No.	Description [W x D (mm)]	Model
W6060501	365x315	WF-02G / 05G
W6061001	450x380	WF-10G / 12G
W6061501	465x400	WF-15G / 22G
W6062501	558x440	WF-25G
W6064001	988x490	WF-40G
W6067201	1068x565	WF-72G



Glass viewing window

The threefold tempered glass viewing window enables easy sample monitoring.



Vacuum Oven

The vacuum oven is optimally designed for separating solvents from solutions or other samples with high boiling points. By creating a vacuum, the boiling point of the solvent is reduced, which protects the sample and simplifies the separation process. This equipment is widely used in biochemistry, chemical industry, pharmaceuticals, medical and health fields, agricultural research, and environmental protection for applications such as powder drying, baking, and sterilization of various glass containers. It is particularly suitable for the rapid and efficient drying of heat-sensitive, easily decomposed, or oxidized materials, as well as complex components.

Features

Operation

- > Push-button control panel for easy operation
- > Three preset temperature points for quick program start
- > Ball valve for vacuum operation in the oven
- > Needle valve for controlled venting
- > All connections for vacuum and venting are located at the rear

Temperature Control

- > Integrated programmer with one temperature profile, up to 9 steps, and up to 200 loop repetitions for selected steps

Structural and Safety

- > Toughened glass doors provide easy access to the oven interior
- > Safety door cover protects users and laboratories in the event of glass breakage
- > Overcurrent and over-temperature protection
- > The chamber is constructed from stainless steel with a smooth, even finish



Specifications

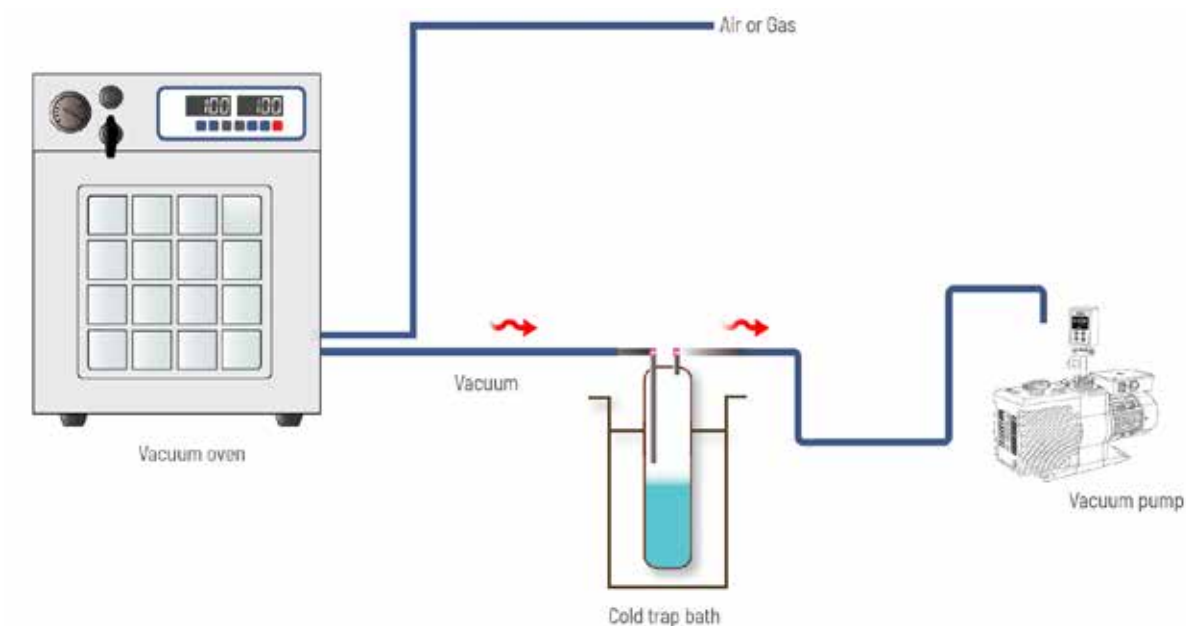
Model	WOV-30	WOV-65	WOV-120
Order No.	W6071030	W6071065	W6071120
Display and Control	Temperature LED display button control, vacuum gauge display		
Volume [L]	30	65	120
Temperature range [°C]	RT+5 ~ 250	RT+5 ~ 250	RT+5 ~ 250
Temperature resolution [°C]	0.1	0.1	0.1
Temperature variation [°C]	±3.7 (at 100°C)	±3.7 (at 100°C)	±3.7 (at 100°C)
Heating power [W]	2100	2100	2550
Vacuum range	0 ~ 1 atm	0 ~ 1 atm	0 ~ 1 atm
Timer	1min ~ 99h59min	1min ~ 99h59min	1min ~ 99h59min
Number of shelves	3	3	3
IP code	IP20	IP20	IP20
Vacuum connector [mm]	Ø10	Ø10	Ø10
Venting connector [mm]	Ø10	Ø10	Ø10
Communication interface	RS-232	RS-232	RS-232
Chamber dimension [W x D x H (mm)]	311x317x309	394x388x387	486x500x496
Overall dimension [W x D x H (mm)]	642x589x630	719x628x707	746x779x807
Power supply	220-240 V, 50 / 60 Hz		
Weight [kg]	63	103	147

Standard includes the oven and shelves



Related Products for Vacuum Ovens

Organization chart for use of Vacuum oven with Pump and Cold trap bath



Accessories

Gasket

Installed between chamber and door.

Order No.	Part	Suitable for
W6071032	Gasket, silicone	WOV-30
W6071062	Gasket, silicone	WOV-65
W6071122	Gasket, silicone	WOV-120



Vacuum Pump and Cold Trap

Order No.	Part	Suitable for
169520	Vacuum pump C520	WOV series
900104	Vacuum pump R-16SN	WOV series
W8603040	Cold trap	WOV series



WI-control software

WI-control is software designed for controlling devices, automating processes, and documenting measurements and results. It integrates WIGGENS laboratory devices and supports devices from other manufacturers. The software can network up to 128 devices simultaneously via a single PC, enhancing the efficiency and ease of automating laboratory experiments and processes.

Save time and improve efficiency

On the PC, you can automate laboratory processes, store custom recipes and data, manage workflows, and perform calculations during experiments. All connected devices can operate in cascade mode, allowing machines to automatically function when specified conditions are met.

Increase safety

Safety conditions can be configured to trigger alarms or shutdowns when activated, triggering alarms or shutdowns when activated. In remote operation, you can control complex reactions from a safe distance. The numerous automation options for recipes and processes enhance process reliability, improve user safety, and increase the reproducibility of all procedures.

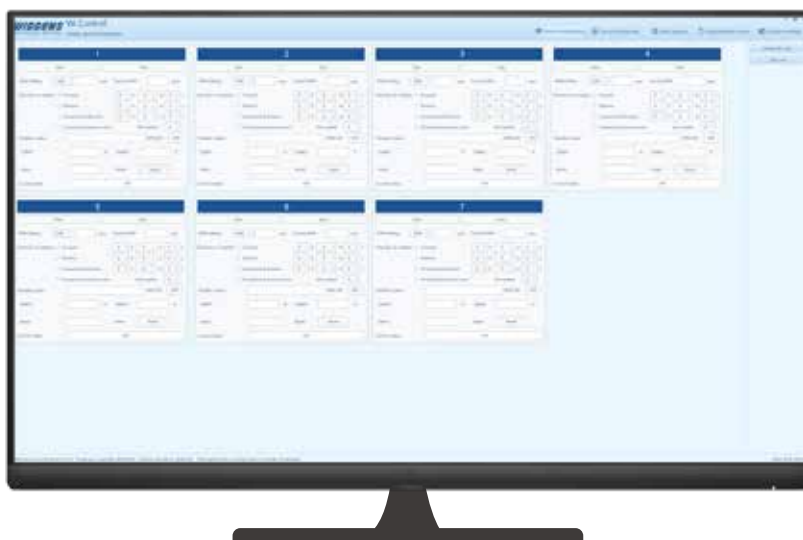
Real-time data recording and secure storage

Measurement data generated during a process can be exported in XLS and PDF formats for documentation and further analysis. All operations and changes to settings are recorded, facilitating the repetition of the experimental process.

System requirements

The WI-control software can be installed on any PC that meets the following system requirements.

System requirement	Minimum	Recommended
Operating system	Windows®7 or later, 32-bit	Windows®7 or later, 64-bit
Memory	2 GB	4 GB
Processor	2.5 GHz dual-core processor	2.5 GHz 4-core processor
Interfaces	1 x USB or 1 x RS232	depending on the number of units controlled
Display	6,500 colors	16 million colors
Screen resolution	1,400 x 1,050 pixels	1,680 x 1,050 pixels



GAS GENERATORS

- H₂, N₂, O₂, Compressor, Purified Air, and Zero Air
- > Hydrogen generator (PEM technology)
 - > Hydrogen and Zero Air Generator (Two-in-One)
 - > Nitrogen Generator (PSA Technology or Hollow Fiber Membrane)
 - > Nitrogen and Zero air generator (Two-in-one)
 - > Compressor and purified air system
 - > Zero air generator / Ultra zero air generator



H₂ GENERATOR

Purity: 99.9996% or 99.99996%
Flow rate: 100mL/min-20 L/min
General Version, Flat Version, Tower Version, and 19" Rack Version



N₂ GENERATOR

Flow rate: 100 mL/min-20 L/min
Purity: 95-99.9999%



O₂ GENERATOR

Flow rate: 6 L/min, 10 L/min
Density: 95%



ZERO AIR GENERATOR

Flow rate: 1.5-30 L/min
HC & CO Content: < 0.05 ppm
CO₂ Content: < 1 ppm
NO, SO_x Content: < 0.1 ppm

COMPRESSED AIR SYSTEM / PURIFIED AIR SYSTEM

Flow rate: 20-900 L/min
Pressure: 5 - 10 bar



Product brochure
online at
www.wiggins.com



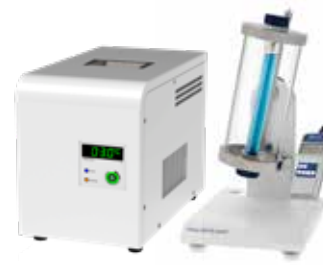
Rotational Viscometer

Provides professional and accurate viscosity measurements tailored to your specific requirements.



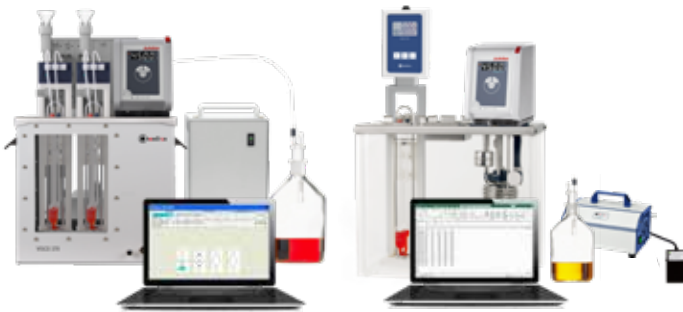
Falling Ball Viscometer

The Viscoball precisely measures the viscosity of transparent Newtonian liquids and gases using a specialized ball.



Automatic Viscosity Measurement System (Capillary viscometer)

Semi-automatic or automatic viscosity measurement system.



Density Meter

Portable Density / Specific Gravity / Concentration Meter



pH / Cond. / DO Meter

Precise, reliable, and selective in the lab and in the field



Refractometer

Scale Handheld Refractometer | Digital Refractometer



Titration, Auto Sampler, Software and Electrodes

With its broad performance range, the Chemtron titrator is well suited for potentiometric titration and offers extensive possibilities for expansion and automation. Its high-resolution, precise pH/mV, and "dead-stop" measurement interface enable swift, reliable, and accurate determinations of a multitude of parameters.

Chemtron titrators are typically known for their precision, ease of use, and capability to handle a wide range of titration applications.

- > Burettes and Titrators
- > Burettes and Titrators with interchangeable unit
- > Karl Fischer Titration
- > Sample changers and accessories
- > Titration software
- > Electrodes for Titration
- > Related reagent



CHEMTRON REACTION & PURIFICATION SYSTEM

Featuring Reactors from Lab to Production Scale

Energy | Petrochemical | Life Sciences | Cosmetics | Pharmaceutical | Environmental

Glass Reactor and Peripheral Units

These systems are essential tools for research, scale-up, and production across a wide range of scientific disciplines. Designed for maximum diversity and ease of use, we have developed a simple base system building platform that allows each reactor system to be customized.

- > Bench-top glass reactor (250 mL-5 L)
- > Pilot plant glass reactor (10-100 L)
- > Glass spherical reactor (up to 200 L)
- > Glass industrial production equipment
- > Glass filter reactor (150 mL-150 L)
- > Glass pressure reactor (up to 6 L)
- > Homogenization reactor
- > Ultrasonic, photochemical and hydrogenation reactor
- > Parallel reaction station
- > Stirrer & Pump
- > Dosing unit
- > pH measurement and control
- > Auto reaction software



ChemTron
A brand of Wiggins

Stainless Steel Reactor and Peripheral Units

The requirements of our customers for the reaction vessels are as varied as the respective processes which are carried out in them. In recent decades, we have developed a modular system with standardized connection components, in order to economically implement individual solutions. This greatly simplifies the design and construction of our custom-made products.

- > High-pressure reactor, up to 200 bar
- > Low pressure reactor, up to 25 bar
- > Stainless steel reactor for atmospheric pressure or vacuum
- > Nutch filter reactor
- > Temperature control system
- > Stirrer unit: mechanical or magnetic coupling
- > Dosing unit
- > Ball valve, needle valve, solenoid valve, pneumatic valve
- > Auto reaction software



ChemTron
A brand of Wiggins



WIGGENS
THE MAGIC MOTION



WIGGENS China

Building No. 45, Tianshan International Enterprise Base,
Yanjiao Economic Development Zone, Beijing, China
Tel : +86-4008092068
office@wiggens.de



WIGGENS GmbH

Wiescher Str. 11a
42277 Wuppertal Germany
Tel:+49 1520 84 20 996
www.wiggens.com

Authorized Distributor